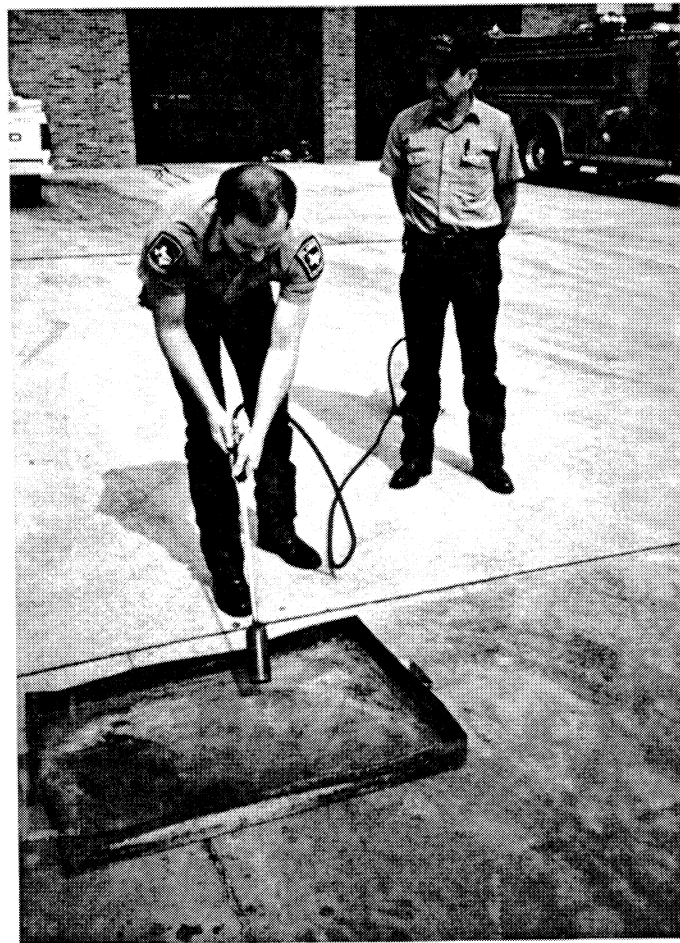
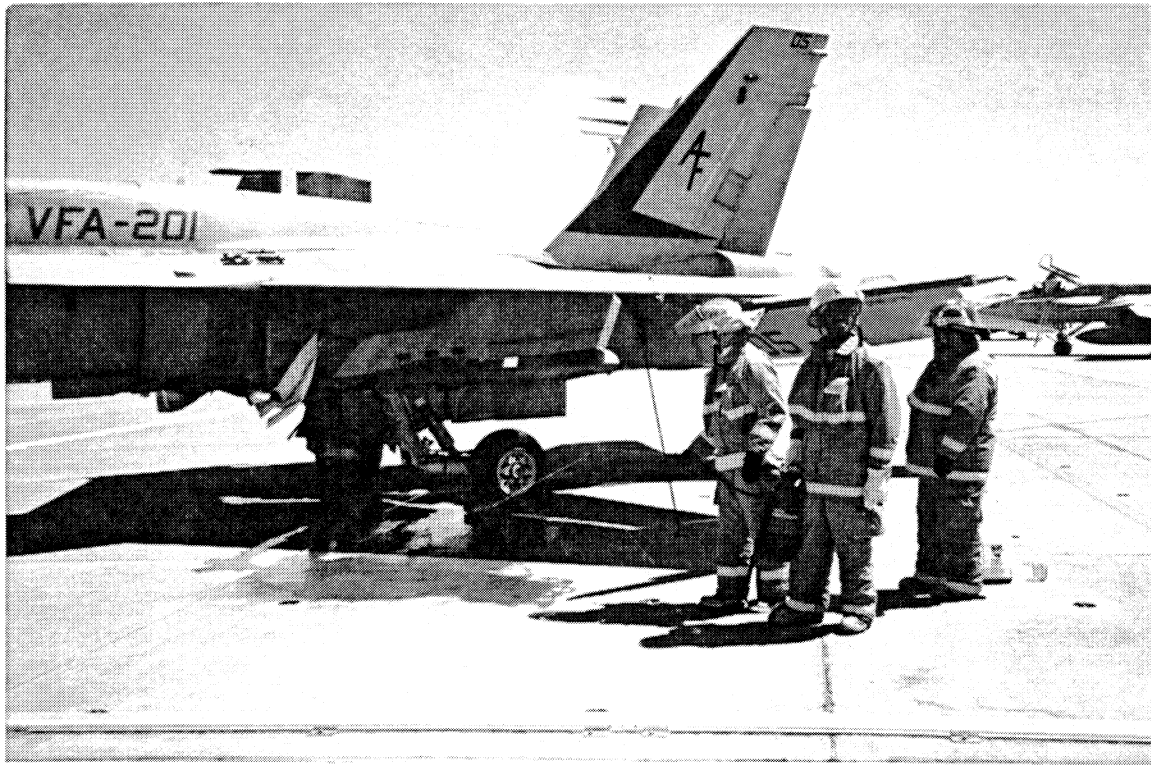




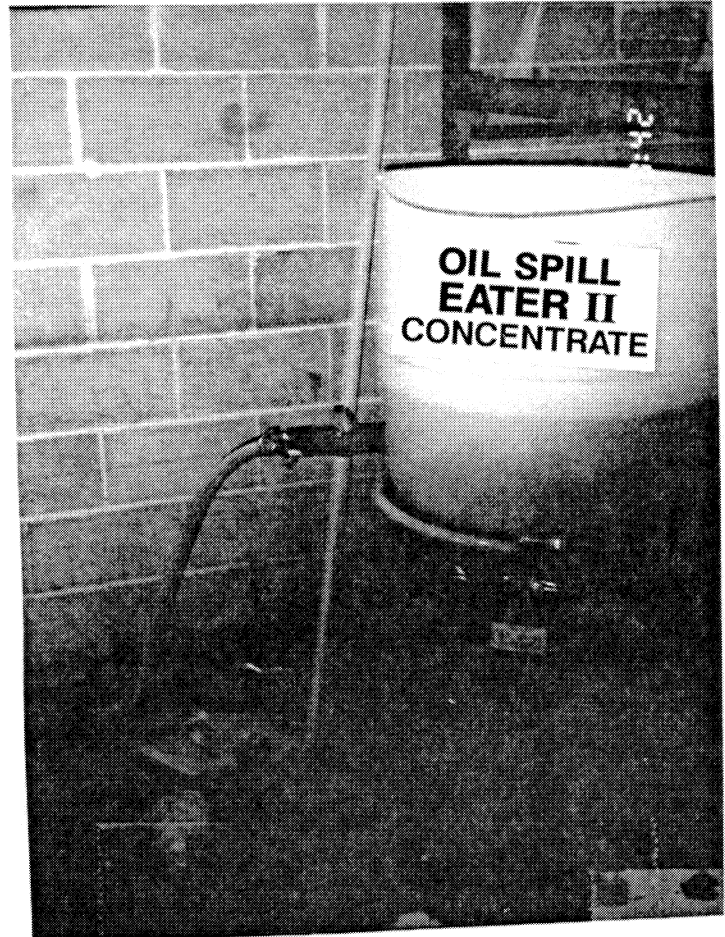
OSE II's TEXACO CRUDE OIL CLEANUP ON WATER



**OSE II on DIESEL PROVING NONFLAMMABILITIES
3 MINUTES AFTER APPLYING OSE II**



**JET FUEL SPILL CLEANUP USING
OSE II AT JOINT RESERVE BASE - FT. WORTH, TEXAS**



UNDER CHEMICAL PLANT CLEANUP USING OSE II -

Drilling Monitoring Well

**Applying OSE II Down
Monitoring Well - 15' to 20'**